

Information Management for Successful Outcomes

Instrument Tracking Systems

MDRAO Conference September 10-12, 2017
MEASURING SUCCESS:
QUALITY ASSURANCE IN MEDICAL DEVICE REPROCESSING



Tony Vestel
Integrated Workflow Solutions Territory Manager

Instrument Tracking Specialist
OR Integration Specialist

GETINGE 
PASSION FOR LIFE



MDRAO Conference
September 10-12, 2017
MEASURING SUCCESS:
QUALITY ASSURANCE IN MEDICAL DEVICE REPROCESSING



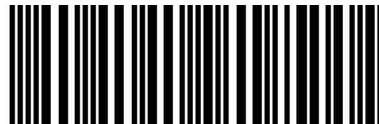
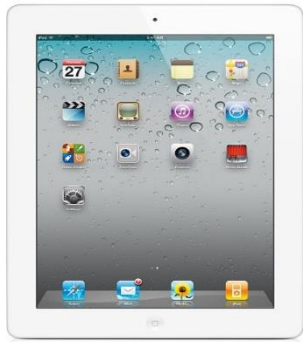
WHAT IS A TRACKING SYSTEM?

A tracking system is used to record the processes, results and location of items, throughout a process from beginning to an end.

“Tracking System” is a very general term and can utilize many different technologies. (Paper, PC’s)



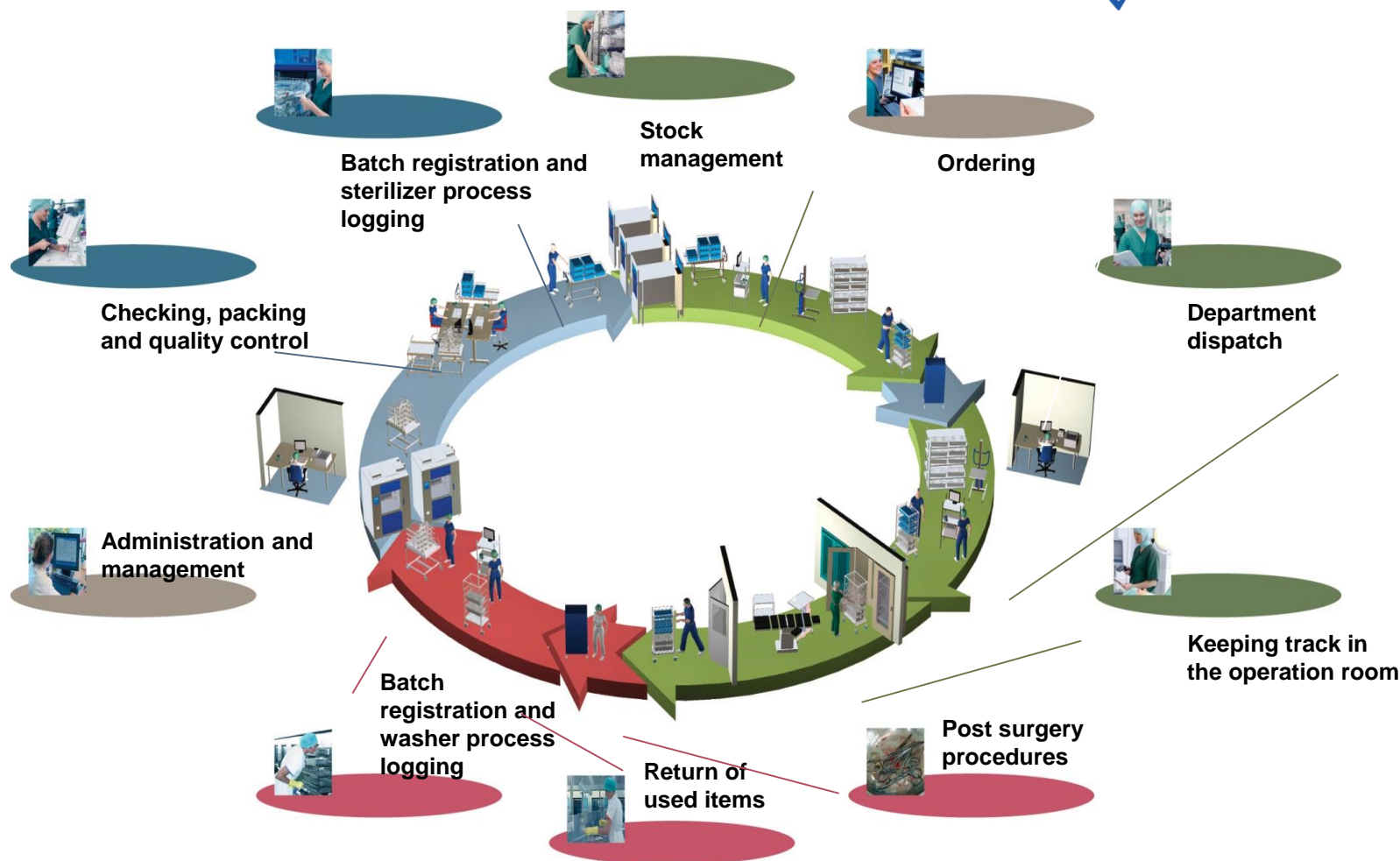
CURRENT TECHNOLOGY



MDRAO Conference September 10-12, 2017
MEASURING SUCCESS:
QUALITY ASSURANCE IN MEDICAL DEVICE REPROCESSING



STERILE PROCESSING WORKFLOW



Decontamination

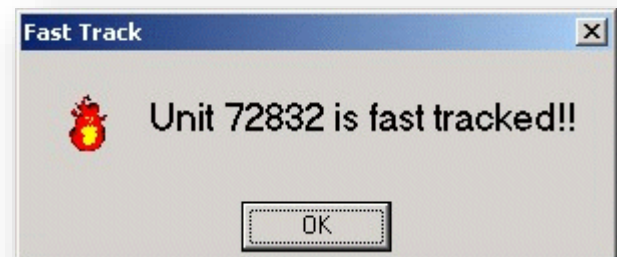
Register instrument sets back into Decontamination

Log errors like mishandled sharps,
broken instruments

Separate hand wash or special handling equipment

Register items into washers

Alert staff to priority items based on
inventory availability or priority plans



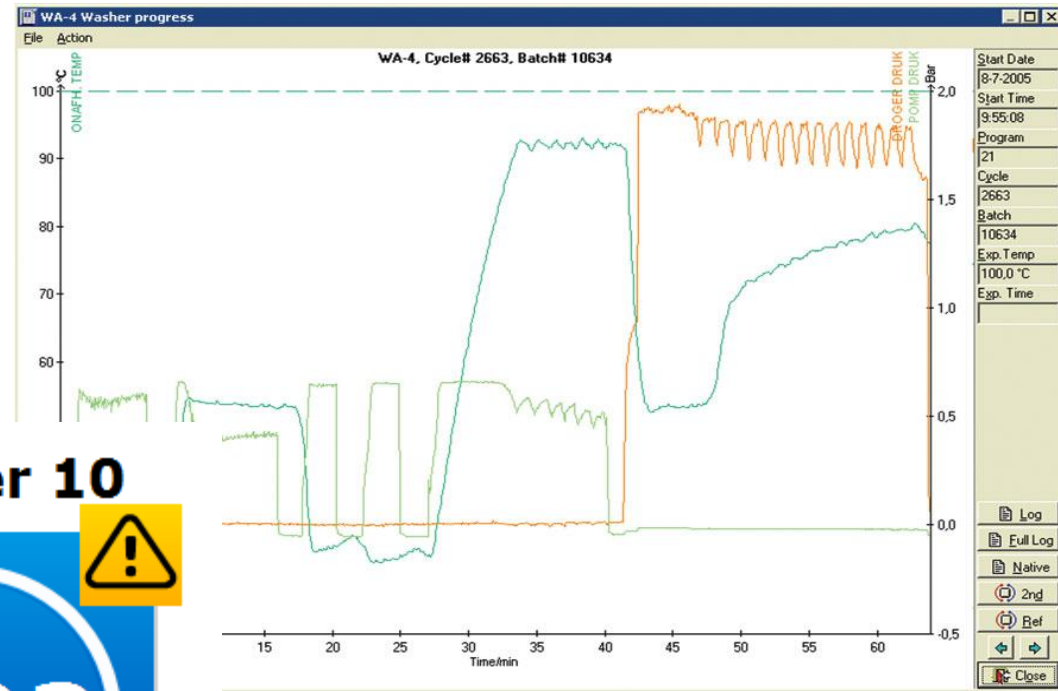
Washer Load Registration & Connectivity

Cycle Completion Notification

Ensure Correct Parameters

Record Cycle Errors

Record TOSI Tests



Packing/Assembly



- Labels (Automatic)
- Lists (Automatic)
- Loan Trays
- Missing Instruments
- Pictures

Shoulder Instrument Basic Set

Customer: Operating Room
Packed By: Tony Vestel
Stock Loc.: Row 1 Shf 5

Serial No.: P0012-001 of 6
Program: Vac 5/30
Packed: 08/03/11

EXPIRATION DATE: 8/2/2012

Shoulder Instrument Basic Set



Unit: 1131

Shoulder Instrument Basic Set



Unit: 1131

- Alerts
- BIs
- Peel Packs
- Wraps
- Containers

Hospital Instrument Count Sheet

Unit:

Instrument Set / Pack: KIRSCHNERS THREAD

Service: _____ Assembly Date: _____

Method of Sterilization: **High Temp** Set No. _____ of **20** Stock Location: FJ3

OR - Rm # Assembled By: _____ Complete: YES ☐ NO ☐

T-DOC Item No.	Primary Cat. No.	Secondary Cat. No.	Item(s)	PAR	Tech	1st	ADD	2nd	END
-------------------	---------------------	-----------------------	---------	-----	------	-----	-----	-----	-----

104	CD7844777		Long allis clamp (NEW)	1					
2007	CD6504		Driver 8mm	1					

ARROWS

mm.77			Qu-Hendon Apd Retractor Grip Handle	1					
-------	--	--	-------------------------------------	---	--	--	--	--	--

			HUDSON BURR 22 MM x	1					
			ALLISON LUNG RET ADULT	1					
			Long allis clamp (NEW)	1					

TRAY

			Ragnell Retractor	3					
--	--	--	-------------------	---	--	--	--	--	--

			Long allis clamp (NEW)	1					
--	--	--	------------------------	---	--	--	--	--	--

CLAMP

			Allis clamp	1					
--	--	--	-------------	---	--	--	--	--	--

			Metzenbaum Scissors 14 cm	1					
			yo scissors straight 15 cm (new)	1					
			Long allis clamp (NEW)	1					
			Scissors 8.0 cvd	1					
			Mayo scissors bent 15 cm	1					
			Scissors 7.0 Str	1					

ARROWS

345			Implant 6.0 x2	1					
-----	--	--	----------------	---	--	--	--	--	--

2351316			Belfour	1					
567483			Scissors 7.0 Str	1					
567483			Scissors 7.0 Str	1					

REMARKS / ADDITIONAL ITEMS:

SCRUB: _____
CIRCULATOR: _____
DATE USED: _____
COMPLETE: YES ☐ NO ☐

Last Updated on 5/6/2008 1:10:25 PM

PROBLEMS WITH SET?

- ☐ INSTRUMENT NOT CLEAN
- ☐ INSTRUMENT MISSING, NOT NOTED ON COUNT SHEET
- ☐ INSTRUMENT NOT SHARP OR NOT WORKING PROPERLY
- ☐ EXTRA INSTRUMENT IN SET
- ☐ WRONG INSTRUMENT IN SET
- ☐ SET OPENED, NOT USED



Packing/Assembly

On-screen assembly

Prevent incomplete trays
leaving

Easily identify missing
instruments

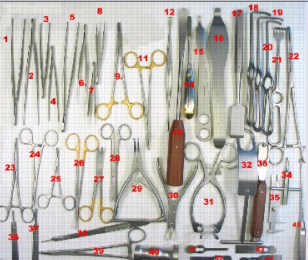

Automatically mark printed
count sheets

Print labels with missing
instruments

Current contents list

Product No. P0012
Sterilizer Program Steam
Packing Material Full Container w/ 4" Basket
Remarks
Make sure to put the tips protectors on the scissors before processing.
Product Name Shoulder Instruments Basic Set
Implant? N

	Item	Description	Mfg.	Alt.	Count	Present
1	✓	S0022 Forceps Kocher Artery Str 5-1/2"	SU2790		4 (2)	4
2	✓	S0023 Forcep Pean Curved 7-1/4"	106-181		1 (1)	1
3	✓	S0029 Forceps Bone Holding 130mm	399.77		1 (1)	1
4	✓	00008 Needle Holder Haley Serrated 5"	121-121		1 (1)	1
5	✓	S0017 Retractor Baby Weitlaner 4-1/4"	OS5532		2 (1)	2
6	✓	00012 Retractor Hornman Sharp 15mm x 160mm	399.40		1 (1)	0
7	✓	212.822 2.4MM LOCK SCREW SELF-TAP W/STA			5 (1)	5
8	✓	00013 Retractor Hornman Blunt 22 cm Blade	DS4160		1 (1)	0
9	✓	S0017 Retractor Baby Weitlaner 4-1/4"	OS5532		1 (1)	1
10	✓	S0025 Scissors Metz Cvd 4-1/2"	SU2389		1 (1)	1
11	✓	S0147 Scissors Super Cut 6-3/4"	SU1811		1 (1)	1
12	✓	S0039 Hammer 500 Gram	399.42		1 (1)	1
13	✓	S0035 Knife Handle Beaver #55	OP0701	RH156	1 (1)	1
14	✓	S0037 Knife Handle Long #3	SU1403		1 (1)	1
15	✓	S0028 Lamina Spreader 120 Deg 75mm	NL5075		2 (1)	2

Local Name
Group: Forcep

MISSING ITEMS

Unit: 740

0 / 4 SU2790 Forceps Kocher Artery Str 5-1/2"

0 / 1 SU2389 Scissors Metz Cvd 4-1/2"



Packing/Assembly

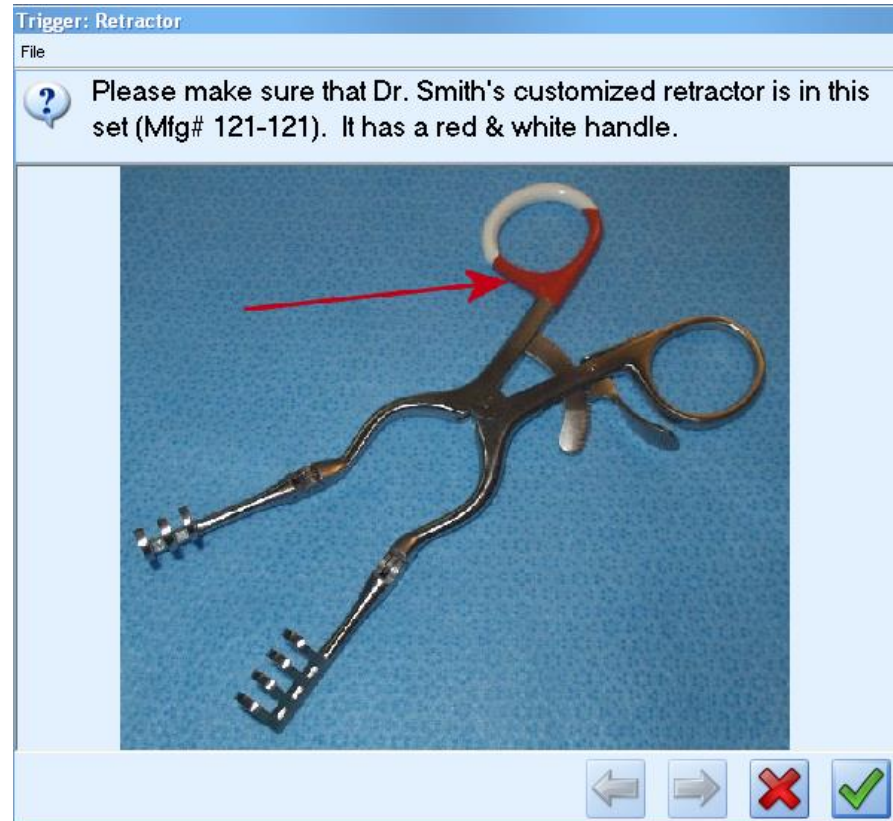
Reference tool for complex instrumentation

QA tool ensuring proper maintenance and assembly

Provides a resource for training and education

Easy access to manufacturer IFU's

Document instrument repairs



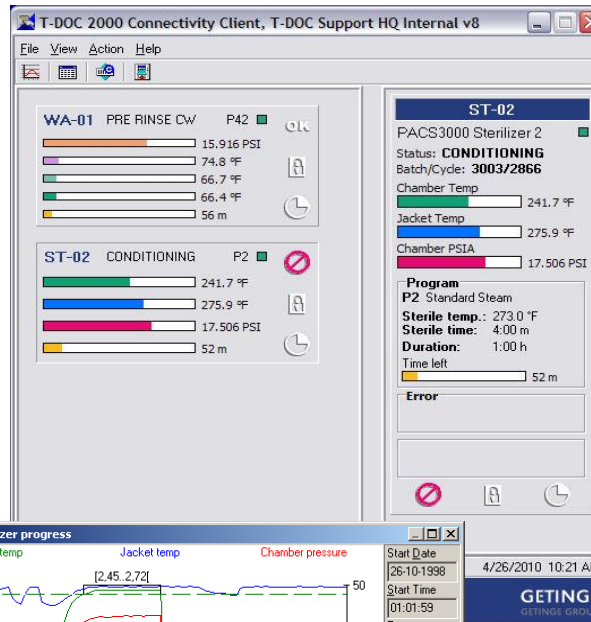
Sterilizer Load Registration & Connectivity

Recording cycle contents

Ensure correct parameters for correct item

Record cycle errors

Alert if a Biological Indicator is required



DATE : 03/20/2008
PROCESS START : 18:54:34
MACHINE NAME : 733HC
CYCLE COUNTER : 2866

PARAMETERS

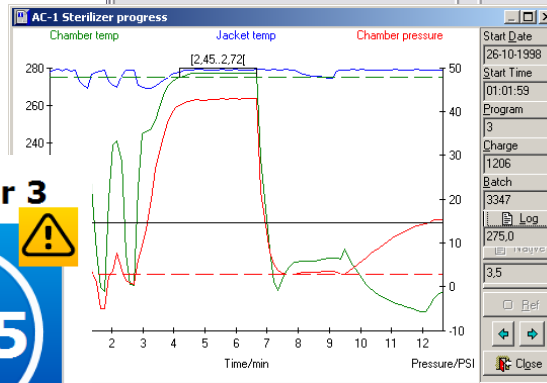
Exposure Time 00:04:00
Drying Time 00:30:00
Exposure Temp 273.0 °F

SIGNALS

AI03 Chamber PSIA
AI00 Chamber Temp

PROGRAM: P2 vac PREVAC1

PROGTIME	AI03	AI00
START		
00:00:00	14.55	137.8
PURGE		
00:00:00	14.54	137.8
00:01:00	21.63	124.5
CONDITIONING		
00:02:01	24.04	154.7
00:02:56	32.09	175.4
POS. TRANS. PT.		
00:03:00	31.19	185.3
00:04:00	18.09	218.4
00:05:00	12.62	211.9
00:05:54	9.72	204.2
NEG. TRANS. PT.		
CONDITIONING		
00:05:55	9.74	204.2
00:06:00	11.18	203.9
00:07:00	22.35	230.6
00:07:56	32.10	241.9
POS. TRANS. PT.		
00:08:00	30.23	249.2
00:09:00	15.42	218.2
00:10:00	9.04	204.5
00:11:00	5.89	194.5



Sterile Storage/Mobile Equipment



Receive and manage inventory

Track mobile equipment to the wards

Manage maintenance cycles, and rental equipment, and anticipate events as opposed to reacting to them



Picking & Dispatching

Case cart handling

Pick lists and delivery notes

Customer distribution and ordering

Emergency handling

Correct dispatching to multiple locations

Real-time case requirements








Central Supply

2108
O.R. ROOM 8

Order ID 89983

Tel:
Fax


5/5/2004 9:00:43 AM
Sign.: EFG

Product	Name	Unit
19569	LG TOWEL CLIP	627109 
12-459	BONE RONGEUR	627108 
100119	ARTHREX ACL/PCL RECONSTRUCTION SYS.	627107 
100201	SAGITAL SAW (2 PCS)	627106 
15381	KNIFE HANDLE,#4, 5.5"	627105 



Scanning in the Operating Room

Scan to locations (shelving) within cores easily locating items

Scan to rooms furthering locating abilities

Rush Plans for fast turn around on needed instruments or sets

Interfacing to/from OR Scheduling/EMR and Material Management Systems for automated data transfers and conflict checking.



Scanning in the Operating Room

Patient Registration

Scan instrument sets/peel packs to a patient

Operation Registration

Operating Room and type of procedure

Special needs for Surgeon and Patient

Time, Date, Patient Information & OR Staff

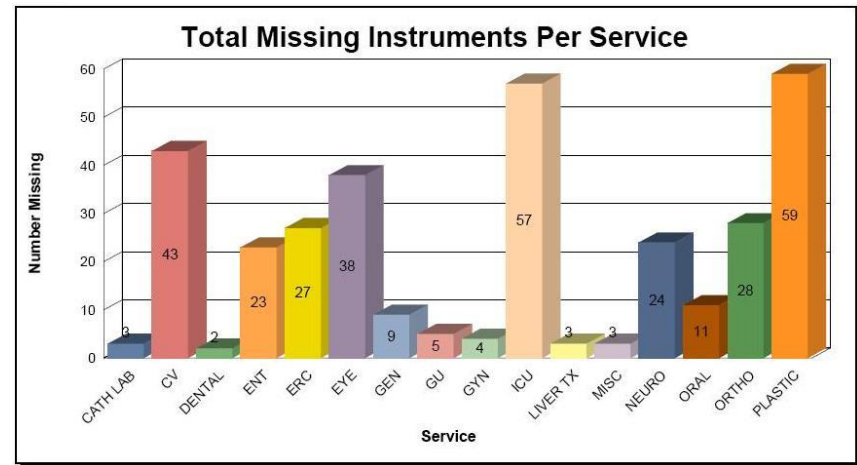
Preference and Pick List Automation



Administrative Area

Complete Reporting Capability:

- Staff & Department Productivity
- Sterilizer, Washer & Incubator
- Production Costs
- Staffing
- Turnaround Time
- Missing Instruments
- Inventory Optimization



ANN SMITH

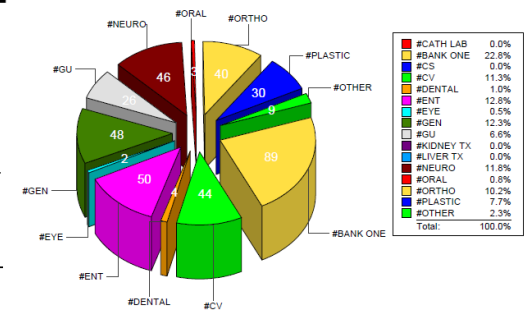
Trays

100+ Instrument Tray:	56
76-100 Instrument Tray:	36
51-75 Instrument Tray:	28
21-50 Instrument Tray:	72
1-20 Instrument Tray:	194
Total Trays:	387

Single Item Peel

Peel Packs:	19
Grand Total:	406

Total Instruments Processed: 19,434



Scanning Demonstration



GETINGE

PASSION FOR LIFE

Tony Vestel

(214) 693-7152

tony.vestel@getinge.com